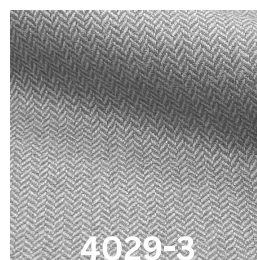
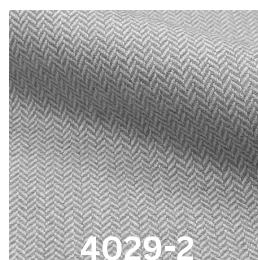
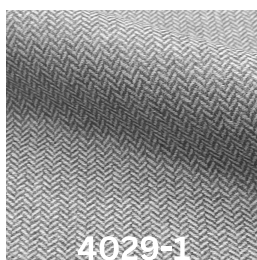
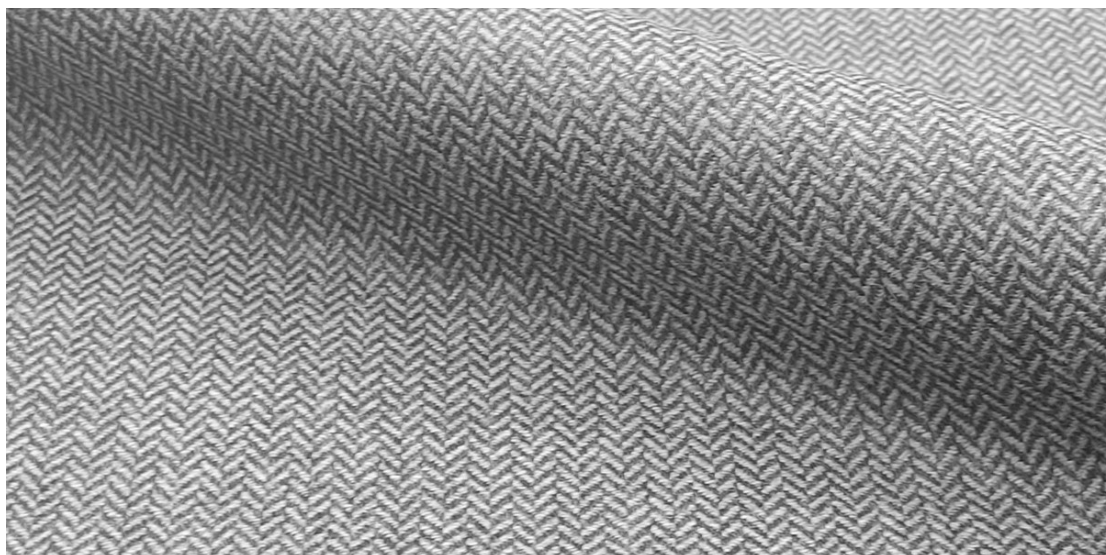


# GLEN CLOVA



The Glen Clova herringbone weave is intended to mimic the glaciated valley of its namesake, carved into the landscape across Angus, Scotland, where lies the River South Esk.

Content	:	100% Wool
Colourways	:	4
Width	:	55 in / 140 cm
Martindale Rubs	:	40,000
Care Instructions	:	Spot Clean
Origin	:	Scotland